

Reaching immigrants and refugees

Multi-Ethnic Ministry of North Texas (MEMNT) strives to obey Jesus' command in Matt. 28:19-20:

“Go therefore and make disciples of all nations, baptizing them in the name of the Father and of the Son and of the Holy Spirit, teaching them to observe all that I have commanded you.”

This outreach program is led by Rev. Dr. Solomon Yadessa and overseen by Revs. James Woelmer, Faith, Plano, and Brent McGuire, Our Redeemer, Dallas, along with an advisory board. MEMNT works to achieve its goal by ministering to the spiritual, physical, social and emotional needs of immigrants.

Vickery Meadow Apartments, a housing complex in Dallas, is home to immigrants from 220 countries and has more than 35,000 residents. The physical needs of the people are great and help takes many forms. In seeking to meet these physical needs, this ministry provides transportation for doctor visits and job interviews, and help with finding beneficial resources and completing applications. The ESL and computer classes and various tutorials offered are among the services available to the many immigrants in the area. The ESL program



African immigrants enjoy fellowship following worship. The service is lead by Rev. Dr. Solomon Yadessa, pictured in center.

continually provides opportunities for the ministry to come into contact with people from many nations.

The most important aspect of this ministry remains meeting spiritual needs. Baptism, confirmation and worship are offered and encouraged. The Saturday program remains a vital part of reaching the refugee youth. Children are transported to Our Redeemer Lutheran Church for Bible study, meals and activities. Vickery Meadow has limited outdoor space, so the Saturday

program gives the children a safe place to play.

The world's mission field has come to Dallas and LWML Texas District has aided the ministry through two separate grants funded in 2018 and 2020. May God be glorified in, with and through the work being done by this ministry and the generous mite offerings from the LWML Texas District.

Joy Cowan

Vice-President of Gospel Outreach



A group of friends gathered together over last summer and made 16 quilts, which they donated to the Valley Haven Inc. Emergency Children's Shelter in Harlingen. Their mission is to provide refuge for abused, neglected and abandoned children who have been removed from their homes through Child Protective Services. Valley Haven's goal is to stop the cycle of abuse, allowing the children in their care to heal and learn to have strong, nurturing relationships.

Peggy Elder • St. Paul, Harlingen

We are Lutheran Women in Mission!

But we could easily be called:

• **Lutheran Women in Study** as we develop a closeness to our Savior through prayer, Bible study, worship and devotionals.

And they devoted themselves to the apostles' teaching and the fellowship, to the breaking of bread and the prayers.

— Acts 2:42

Make staying in the Word and attending worship a top priority.

• **Lutheran Women in Witness** by using opportunities every day to be God's witnesses.

You are the light of the world. A city set on a hill cannot be hidden. Nor do people light a lamp and put it under a basket, but on a stand, and it gives light to all in the house. In the same way, let your light shine before others.

— Matt. 5:14-16a

Share Jesus' love by letting His light shine through you as you develop relationships with those in your communities.

• **Lutheran Women in Service** by reaching out and valuing that everyone is unique and loved by God.

And he said to them, "Go into all the world and proclaim the gospel to the whole creation"

— Mark 16:15

Prepare yourself to share your faith as you find activities that serve those in need.

One of the ways we can be Lutheran Women in Mission, Witness and Service is through our partnership with Lutheran World Relief (LWR). The quilt-making and kit-collection activities make a huge difference in the lives of so many around the world. Today's young women want to make a difference, so invite them to participate in your ingathering activities.

If you are quilting, offer to teach them the craft. Make it a multi-generational event as the young learn to tie quilts and they then teach you the latest in technology.

Remember, together we can make a difference in each other's lives and those of our neighbors by following the example Christ set for us. So let us get those quilts tied, those kits collected and our boxes packed for the Texas region LWR ingathering, to be held in November. The current schedule is:

- ▶ **Seguin area**
Nov. 5-6, St John, Marion
- ▶ **Houston area**
Nov. 6, Epiphany, Houston
- ▶ **Dallas area**
Nov. 13, Messiah, Plano

Details of the ingathering can be found at lwmltxdist.org/mission-service.

Mary Afsharirad
Mission Service Committee
Chairman



Mildred Emshoff, a lifelong member of St. John's, Wharton, celebrated her 90th birthday on March 19.

Mildred is also a member of St. John's Ladies Aid and has served in numerous leadership roles over the years. Along with other ladies of St John's, Mildred is still active in organizing the monthly Sewing Day, at which time quilts are sown for those in need in the community.

**2020-22
Mite Goal
\$377,500**

**Mites received through
March: \$176,955**

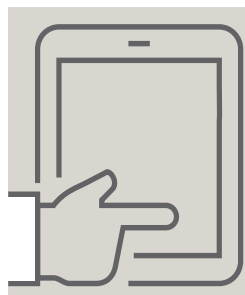
**Mites still needed
to meet goal:
\$200,545**



**Mission grants
paid through
February: \$107,350**

**Please include a remittance
form when submitting your
mite offerings. Send them to:**

LWML Texas District
Attn: Kathy Walther,
Financial Secretary
PO Box 124
Giddings, TX 78942



Stay connected

- lwmltxdist.org
- [facebook.com/LWMLTexas](https://www.facebook.com/LWMLTexas)

Send LWML news and photos to Joanna Roche, District News editor at districtnews@lwmltxdist.org