

The Lone Star Connection



November 2025

Bi-Monthly Newsletter

Vol. 3, Issue 6

Faithful Steps Together for Christ



Each day in LWML service reminds me that leadership is not about standing in front, it's about walking beside. Whether you're organizing a local event, supporting your church family, or quietly praying over the work ahead, your faithfulness is a testimony to God's grace.

Scripture tells us: *The steadfast love of the Lord never ceases; his mercies never come to an end; they are new every morning; great is your faithfulness.* (Lamentations 3:22–23). This promise sustains us. It's what allows us to lead with humility, serve with joy, and persevere with purpose, even when the path is complicated or the calendar full.

As your LWML Texas District President, I've seen the Spirit move through every detail: convention planning, financial stewardship, and the quiet encouragement shared between sisters. Each role matters. Each woman is essential to the Body of Christ.

Our District Focus is intentional:

- Proclaim Christ — His name is lifted high in all we say and do and reflects the hope we have in Him.
- Support Missions — May the Gospel reach hearts near and far through our prayers, gifts, and presence.
- Equip Women — Every sister in Christ feels prepared and encouraged to live out her calling with confidence.
- Serve Others — Our hands and hearts reflect Christ's compassion in every community we touch.

Let us continue to walk in step with the Spirit, proclaiming Christ not just in words, but in the way we lead, serve, and love.

Thank you for your faithfulness, your prayers, and your partnership in this ministry.

2025 LWR Ingathering Dates

Houston

Epiphany Lutheran Church, 14423 West Road, Houston, Texas
Saturday, November 1, 2025, 9 a.m.–3 p.m.

Marion (San Antonio area)

St. John Lutheran Church, 600 S. Center Street, Marion, Texas
Wednesday, November 5, 2025, 9 a.m.–2 p.m.

Plano (Dallas area)

Messiah Lutheran Church, 1801 W. Plano Pkwy, Plano, Texas
Saturday, November 8, 2025, 9 a.m.–2 p.m.

Visit the LWML Texas District website at lwmltxdist.org/mission-service for more information.

2025 Key Dates

November 1, 5, & 8

LWR Ingathering

2026 Key Dates

Feb. 18–20

EC Meeting

Feb. 20–22

BOD Meeting

Camp Lone Star

March 31

Scholarship applications due

June 9–10

EC Meeting

June 10

BOD Meeting

Austin

June 11–13

District Convention

Austin



Save the Date!

June 11–13, 2026

Texas District 44th Biennial Convention

In Austin, TX

Hilton Doubletree Hotel



Mission Grant Highlight



Mission team from Tyler, Texas assembling care packages for community outreach

Discipling and Mobilizing Youth for Gospel Outreach

Glocal Mission, founded and led by Rev. Dr. David Kim, is a Christian non-profit based in Houston, focused on equipping and mobilizing people for disciple-making and church multiplication both locally and globally.

The \$12,000 LWML Texas District mission grant award has enabled Glocal Mission to create specialized programming to gather, train, and organize youth ministry leaders and youth evangelists in Houston for Christ-centered outreach. This mission grant also provides for the training, materials, supplies, food for activities and outreach, and Gospel outreach resources.

In 2025, Glocal Mission trained over 125 students and youth ministry leaders in cross-cultural outreach, celebrated 79 baptisms, and equipped 28 churches with their 5-3-1 evangelism model and “Good–Better–Best” Missional Outcome Framework.

Testimonials from youth and church leaders emphasize the transformative impact of the program, which empowers participants to actively share their faith and serve as disciple-makers. Various mission activities include sharing the gospel in parks, ministering to laborers and the homeless, assembling care packages, and engaging in cross-cultural training. The initiative, described as a movement that has inspired a new generation of bold ambassadors for Christ.

Thank you, LWML Texas District, for helping raise youth who go, share, and multiply!

Helping Little Lights to Shine



Through the generous support of the \$10,000 LWML Texas District mission grant, Let It Shine Enrichment Academy can bless multiple families with scholarships, removing financial barriers and opening doors for young children to grow in faith, love, and learning.

Let It Shine, a Christ-centered ministry of Bethany Lutheran Church, exists to nurture the hearts and minds of young children through a play-based, developmentally appropriate curriculum rooted in the love of Jesus. Families who received scholarship support were given more than just tuition assistance, they received peace of mind, the opportunity for their children to experience high-quality early education and hear the Gospel message.

At Let It Shine, children learn, sing, and grow in a warm environment where each child is seen as a unique child of God. From joyful chapel times and Bible stories to imaginative play and social-emotional learning, the school’s mission is clear: to share the love of Christ and love all children as Jesus loves us.

This mission is made possible by the faithful and prayerful generosity of groups like the LWML, who see early childhood ministry as fertile ground for raising the next generation of believers. The impact of their support extends far beyond the classroom, it touches homes, families, and the Kingdom of God.

Thank you, LWML, for helping Let It Shine Enrichment Academy say “yes” to families in need and for shining the light of Christ through your giving

It’s Time to Apply!

Do you know of a female member of your Texas District congregation studying to become an LCMS full-time professional church worker at an LCMS college or university? If so, it’s time to encourage her to apply for an LWML Texas District scholarship for the 2026-2027 school year!

For eligibility requirements and to apply, visit lwmltxdist.org. Go to “About Us,” choose “Scholarships” from the drop-down menu, and download the 2026 scholarship application.

For more information, contact Michelle Heckmann, Scholarship Committee chairman, at scholarship@lwmltxdist.org. **Completed applications must be sent or emailed to Michelle time-stamped or postmarked by March 31.**



FOLLOW US! 



On the web:
www.lwmltxdist.org



On Facebook:
@Lutheran Women's Missionary League



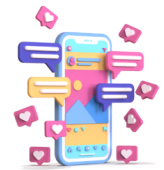
On Instagram:
@lwmltexasdistrict



On YouTube:
@lwmltexasdistrict8339



Questions? Send an email to:
communication@lwmltxdist.org



Lutheran Women
in Mission
TEXAS DISTRICT

Young Women Representatives

At the 2025 LWML Convention in Omaha, Nebraska, Texas District Young Women representatives Mikayla Heckmann and Amy Perez brought their vibrant energy and dedication to mission work. Passionate about advancing the mission of the LWML, they were eager to connect with like-minded women from across the nation.

Their involvement centered on learning, worship, and deepening their commitment to serving others in Christ's name. With the theme "Growing in God's Grace," Mikayla and Amy contributed to discussions and service projects, while strengthening relationships with fellow attendees.

The Young Women's group is a dynamic and diverse representation of the future of LWML—compassionate, energetic, and committed to impacting both local and global communities. Their participation ensures the mission of the LWML continues to thrive for generations to come, both in their home congregations and beyond.

If you would like either of these women to speak to your zone or group, they can be contacted at the email listed.

Mikayla Heckmann, ywnorth@lwmltxdist.org.

Amy Perez, ywrsouth@lwmltxdist.org.

October 20–26th was National Estate Planning Awareness Week — but any time is the perfect time to reflect on your own estate plans.



A well-prepared estate plan not only protects your assets and provides for your loved ones but also gives you the opportunity to support causes close to your heart — like the LWML Texas District Endowments.

When you include LWML Texas District Endowments in your estate plan, your generosity helps shape the future of our organization and leaves a lasting legacy for generations of Lutheran Women in Mission to come!

Gifting today to bless tomorrow — when you make a gift to our endowments, your one-time gift becomes a perpetual gift. Gifts to our endowments are never spent. Instead, they are invested, and the income from distributions supports scholarships, leadership training, and the mission goal.

To learn more about planned giving, you can request a complimentary and confidential consultation with our endowment trustee, Legacy Deo, at legacydeo.org, by phone at 800-880-3733, or email info@legacydeo.org.



From Around the District



Panhandle Zone

Grace, Dalhart LWML will again be providing the Thanksgiving meal to local recipients of Meals on Wheels. We do this every year so that those who usually prepare and deliver the meals can spend the day with their families.

Volunteers from the local 4-H will provide some of the ingredients and our LWML members, families, and friends will cook the turkeys, make the trimmings, the dessert and deliver. On that day we also take the meal to firemen, police, and EMT's that are on duty Thanksgiving Day. While we are doing this, the children and grandchildren of our members decorate the Christmas tree. A fun day for all.

Texas District Retreat

Just over 100 women attended the 2025 LWML Texas District Fall Retreat in Waco on October 10 and 11. About half of the women enjoyed conversation, ice cream, and games at the optional fellowship on Friday night. The attendees enjoyed a breakfast provided by the St. Paul Lutheran LWML as they gathered for the retreat on Saturday morning.

The women were encouraged to step out in faith instead of fear under the theme of "Faith Over Fear" throughout the day. Speaker Christina Hergenrader worked her way through Psalm 23, focusing on faith over fear, through three sessions throughout the day. The women enjoyed an additional hymn study of "O Little Flock, Fear Not the Foe" (*Lutheran Service Book* 666) led by Ruth Meyer. The ladies also enjoyed time for fellowship and encouragement from one another throughout the day. A good time was had by all in attendance.



Mite Report through September 2025

Biennium ends March 31, 2026

2024–2026 Mission Goal	\$403,000.00
Mites Received	\$267,395.41
Total Still Needed	\$135,604.59
Projected 25% to LWML National Mission	\$80,335.00
Mission Grant Goal	\$225,000.00

2024–2026 Mission Grants

Mission Grant	Disbursed	Still Need
Seminarian Scholarship for Texas Students — \$60,000	\$45,000	\$15,000
New Life Children's Center Spiritual Care Program, Canyon Lake — \$20,000	\$15,000	\$5,000
Disaster Response Team, Trinity Lutheran Church, Tyler — \$15,000	\$10,000	\$5,000
Orphan Grain Train Shipping Supplies, Houston — \$15,000	\$11,250	\$3,750
Proclaiming Christ to People Who Are Blind or Visually Impaired (LBW) — \$20,000	\$15,000	\$5,000
Let It Shine Academy, Bethany, Austin, Lutheran Special Education Ministries — \$10,000	\$10,000	\$0
Adventure Woods Day Camp Outreach, Camp Lone Star, Tomball — \$20,000	\$15,000	\$5,000
Shepherd's Canyon Retreat Ministry Scholarships — \$15,000	\$15,000	\$0
Hereford Hispanic Outreach Program, Hereford — \$25,000	\$25,000	\$0
Offering Women Hope: Blue Blossom Pregnancy Centers and Maternal Assistance Program, Houston — \$8,000	\$6,000	\$2,000
Disciple and Mobilize Youth for Gospel Outreach, Glocal Mission, Houston — \$12,000	\$9,000	\$3,000
Little Lambs Parents' Day Out Ministry Playground Equipment, Sulphur Springs — \$10,000	\$0	\$10,000
Christian Education Scholarships K–12, Central Texas — \$25,000	\$12,500	\$12,500
Ysleta Lutheran Mission Human Care Warehouse Repairs, El Paso — \$17,314 (partial funding)	\$17,314	\$0
Total — \$272,314* 2024–2026 Mission Grant Goal \$225,000 *(includes \$47,314 mission abundance from 2020–2024)	\$206,064	\$66,250

Remittance forms can be found at lwmltxdist.org/about-mites.

Mites can also be given online. Simply follow the instructions under the “Donate” button. Our new QR code will take you to the website. The “Donate” button is at the top of every page.

Please include group or individual name, church name, and church city in the note section in order for your LWML group to receive credit for your mite donation.

Please indicate if it is for something other than mites (endowments or retreat). You will receive an email receipt for your donation.

For additional information or if you need assistance, contact financialsecretary@lwmltxdist.org.

