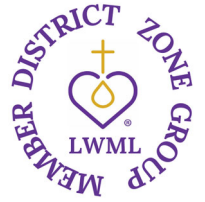


# The Lone Star Connection



January 2026

Monthly Newsletter

Vol. 4, Issue 1

## A New Year Brings Opportunities for Moments that Matter



January invites fresh beginnings and renewed purpose. Having received the gift of God's love for us at Christmas, our presence can be a gift to our neighbor as we share the same love of Christ with the world! In these moments, presence itself becomes a gift, and Christ's love is spoken aloud.

Show up with intention. Encourage one another, serve your communities, and create space for the Gospel to be shared in word and action. Whether a prayer shawl, a meal, or a service event, each builds relationships, strengthens faith, and extends Christ's love. Small acts, rooted in Christ's love, bear fruit in ways we may never see.

Host a "Hope & Cocoa Table" at a local event offering hot cocoa, prayer, and conversation — a cozy way to share warmth and Christ's love in winter. Organize a New Year's Blessings board at church. Invite members to write prayers or hopes for the year ahead, then gather to pray over them together.

Keep showing up. Serve with purpose. Share Jesus, our true and lasting hope. *Be steadfast, immovable, always abounding in the work of the Lord, knowing that in the Lord your labor is not in vain* (1 Corinthians 15:58).

### Important Biennium Mite Deadline — March 20, 2026

Please plan to send in your mite offerings so they will reach the financial secretary by March 20, 2026. A suggested mailing date of March 14 will help ensure they are received by the deadline.

Any offerings received after March 20, 2026, will be recorded in the 2026–2028 biennium.

All mite offerings need to be submitted to:  
LWML Texas District,  
Alissa Elley, Financial Secretary  
PO Box 183  
Seguin, TX 78156



You may also donate online at [lwmltxdist.org/about-mites](https://lwmltxdist.org/about-mites). Select the Donate button and follow the instructions.

To view the current mite report visit the website at [lwmltxdist.org/lwml-texas-district-mites](https://lwmltxdist.org/lwml-texas-district-mites).

### 2026 Key Dates

#### February 18-20

Executive Committee Meeting,  
Camp Lone Star

#### February 20–22

Board of Directors Meeting, Camp  
Lone Star

#### March 1

Registration Opens for Texas District  
Convention

#### March 20

Mite Deadline

#### March 31

Scholarship applications deadline



Save the Date!

June 11–13, 2026

Texas District 44th Biennial Convention

DoubleTree by Hilton Austin

Austin, Texas

Watch for more information to come



## Mission Grant Highlight

### Celebrating Adventure Woods Day Camp

With joyful hearts and deep gratitude, we celebrate the incredible impact of the \$20,000 LWML Texas District mission grant that made Adventure Woods a reality—Camp Lone Star's very first day camp in Tomball!

This generous support transformed their vision into a vibrant ministry space, complete with a dynamic playground featuring slides, climbing structures, and a variety of camp games. This new infrastructure has empowered students to dive into Christ-centered adventures, build lasting friendships, and grow spiritually in a fun and engaging environment.

The response from local families has been nothing short of extraordinary. From glowing reviews and enthusiastic social media posts to multi-week camper registrations, the excitement surrounding Adventure Woods has exceeded all expectations. Preparations are underway to double the camper capacity next year and the hiring of additional staff has already begun to meet the growing demand. Beyond summer camp, the new recreational equipment has become a year-round blessing, serving various groups and enhancing their experiences at Camp Lone Star.

Camp Lone Star praises God for the work He is doing through their leaders, staff, and ministry partners—and they are especially thankful for the LWML's partnership in bringing this impactful ministry to life. Thank you for believing in their mission and helping them share the love of Christ with even more children and families.



Day campers enjoy recreational games, crafts, and fellowship in a Christ-centered environment.

### Hereford Hispanic Outreach Ministry

The Hereford Hispanic Outreach Ministry extends heartfelt gratitude to the LWML Texas District for their generous partnership in expanding outreach efforts in West Texas. A majority of the \$25,000 district grant has been directed toward upgrading Immanuel Lutheran Church's facilities in Hereford. The transformation has created a welcoming space for Hispanic ministry, even as the Anglo congregation has declined to fewer than a dozen members. Their continued support has been instrumental in fostering a vibrant, inclusive community.

Over the past three years, the ministry has hosted impactful outreach events including Vacation Bible School, backpack giveaways, fall festivals, Christmas celebrations, and book fairs. Hispanic pastors and families from across Texas have played a vital role—both in refurbishing the church and education building, and in connecting with the local Hispanic population.



While English as a Second Language (ESL) classes were initially planned for fall 2025, their launch has been postponed to January 2026. The ministry is actively seeking a Hispanic pastor to lead efforts in Hereford, with the vision of using it as a hub to reach surrounding Hispanic towns throughout West Texas.

Mission grant funds have enabled Immanuel Lutheran Church, Hereford to make renovations which are fueling expanded outreach through the Hereford Hispanic Outreach Ministry in West Texas.

## It's time to apply!

Do you know of a female member of your Texas District congregation studying at an LCMS university to become an LCMS full-time professional church worker? If so, it is time to encourage her to apply for an LWML Texas District scholarship for the 2026–2027 school year.

For eligibility requirements and to apply, visit [lwmltxdist.org](http://lwmltxdist.org). Go to "About Us," choose "Scholarships" from the drop-down menu, and download the 2026 scholarship application. For more information, contact Michelle Heckmann, Scholarship Committee chairman, at [scholarship@lwmltxdist.org](mailto:scholarship@lwmltxdist.org). Completed applications must be mailed or emailed to Michelle, time-stamped or postmarked by March 31.

As one of our past recipients says, "This scholarship allows me to focus more fully on my studies and future goals of being a Lutheran school teacher and coach. This opportunity encourages me to continue working hard and aiming high."

## FOLLOW US!



On the web:  
[www.lwmltxdist.org](http://www.lwmltxdist.org)



On Facebook:  
[@Lutheran Women's Missionary League](https://www.facebook.com/LutheranWomen'sMissionaryLeague)



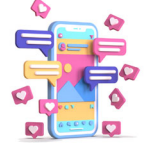
On Instagram:  
[@lwmltxdist](https://www.instagram.com/lwmltxdist)



On YouTube:  
[@lwmltxdist8339](https://www.youtube.com/lwmltxdist8339)



Questions? Send an email to:  
[communication@lwmltxdist.org](mailto:communication@lwmltxdist.org)



Terri Wenzel  
VP Organizational Resources

I would like to say thank you to all the zone presidents for their efforts in gathering group and individual membership information in the LWML Texas District. Current contact information for our group and zone leaders has been used to update our Membership Directory, and the membership numbers reported are important for proper planning of the upcoming LWML Texas District Convention in Austin this coming June.

As you plan for a new year in your zones and groups, I encourage you to utilize the invaluable resources offered through the LWML website: Bible studies and devotions, retreats and workshops, sketches, crafts, and printables, Mite resources, and a plethora of program helps and ideas at [lwml.org/all-spiritual-growth](http://lwml.org/all-spiritual-growth).

## Focus Corner

**Proclaim Christ**—Host a weekly Bible study in your home or at church.

**Support Missions**—Have a "Mission Minute" at each group meeting highlighting one of our mission grants.

**Equip Women**—using the LWML Quarterly, select an article and discuss it in your group.

**Serve Others**—Help prepare and serve meals for youth nights.



October 20–26 was National Estate Planning Awareness Week — but any time is the perfect time to reflect on your own estate plans.

A well-prepared estate plan not only protects your assets and provides for your loved ones but also gives you the opportunity to support causes close to your heart — like the LWML Texas District Endowments.

When you include LWML Texas District Endowments in your estate plan, your generosity helps shape the future of our organization and leaves a lasting legacy for generations of Lutheran Women in Mission to come!

**Gifting today to bless tomorrow** — when you make a gift to our endowments, your one-time gift becomes a perpetual gift. Gifts to our endowments are never spent. Instead, they are invested, and the income from distributions supports scholarships, leadership training, and the mission goal.

To learn more about planned giving, you can request a complimentary and confidential consultation with our endowment trustee, Legacy Deo, at [legacydeo.org](http://legacydeo.org), by phone at 800-880-3733, or email [info@legacydeo.org](mailto:info@legacydeo.org).





LWML Texas District  
44th Biennial Convention  
June 11–13, 2026  
DoubleTree by Hilton Austin  
**Celebrate the Goodness of God**  
**Romans 12:12**

*Rejoice in hope, be patient in tribulation,  
be constant in prayer (Romans 12:12).*

**Goal:** Empower Lutheran women to embody unwavering faith, abound in hope and patience and be fervently dedicated to prayer.

**Objective:** The convention will provide opportunities for:

- Sharing our hope in Christ joyfully with others.
- Uplifting each other as the Holy Spirit enables us to be patient in tribulation.
- Embracing the power of prayer through Bible studies, servant events, and speakers. (James 5:16).
- Drawing strength from God's Word and knowing that God can do all and more than we can ask. (Ephesians 3:20).

**Registration** opens March 1, 2026. All registration information will be available on the website after the Board of Directors meeting scheduled for February 20–22, 2026. There will also be a special edition issue of *The Lone Star Connection* published that will contain the full registration packet. We will once again accept credit card payments (exception being American Express) for registration fees.

Registration for members and guests will be \$185 with Teen registration set at \$160.  
All registrations include Friday lunch.

**Hotel registration** will open March 1, 2026. DO NOT call the hotel before March 1 or you will not receive the discounted rate. The convention will be held at the DoubleTree by Hilton Austin.

Additional information will be updated on the website [lwmltxdist.org/lwml-texas-district-conventions](http://lwmltxdist.org/lwml-texas-district-conventions).

## Trusting God; Together in Mission

You've done it again! We received your generous gifts through your Mite Box donations that we are closer to reaching our Mission Goal of \$403,000 by March 20, 2026. While we are a little behind, we continue to trust that God will provide! He's Got This!

In this new year, would you prayerfully consider a special gift to mites? Remember that your Mite Box is a part of God's living and active ministry of sharing the Gospel!

You and your group help support LWML Texas District Mission Grants through Mite Box donations, Thrivent Choice Dollars®, and recurring electronic donations through the Lutheran Church Extension Fund's JoyfulResponse® program. Remember that 25% of your donations help support national LWML Mission Grants.

LWML Texas District is a 501(c)3 non-profit organization and found by searching LWML Texas District. Please reach out to [financialsecretary@lwmltxdist.org](mailto:financialsecretary@lwmltxdist.org) if you have any questions about mite donations.

Remittance forms can be found at [lwmltxdist.org/about-mites](http://lwmltxdist.org/about-mites). Donations can also be given online. Simply follow the instructions under the "Donate" button. Our QR code will take you to the website.

Please include group or individual name, church name, and church city in the note section for your LWML group to receive credit for your mite donation. Please indicate if it is for something other than mites (endowments, honorarium etc.). You will receive an email receipt for your donation.

For additional information or if you need assistance, contact [financialsecretary@lwmltxdist.org](mailto:financialsecretary@lwmltxdist.org).



## From Around the District

### East Texas Zone

The Pineywoods LWML - Redeemer Nacogdoches brought non perishables to their November meeting to "stock the pantry". The food was donated to the food pantry at Stephen F. Austin State University which provides food to students in need.



### Post Oak Zone

Thanks to the quilters of St. Paul, Serbin many have been blessed with warmth, color, and encouragement. These ladies were gifted with pillow tops to be embroidered. They embroidered the designs and converted them to lap quilts to be distributed to shut-ins of the congregation. Thus far they have distributed 14 lap quilts and have pieced nine more to be distributed when complete. They also have made numerous full-sized quilts that have been donated to Orphan Grain Train to be distributed within the USA and around the world. They also make quilts to be auctioned at local benefits. What a gift God has blessed them with.



Quilters pictured are Judy Boriack, Marian Wiederhold, Carolyn Noack, Wilma Droegemueller, Marjorie Albrecht, Ruby Weiser (not pictured), and Ruby Schulze (not pictured).

